

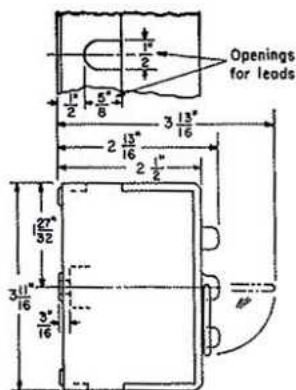
# Pullout Fuse Blocks

## Class J Pullout Block

Poles	Amperes	Catalog No.	Dim. Fig
2	1-30	0116B4078	1A
3	1-30	0116B4075	1B

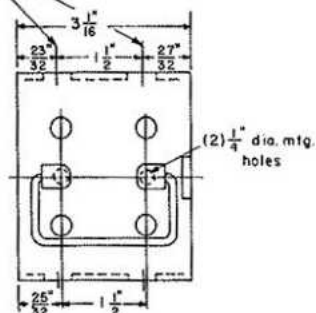


Class J Pullout Block



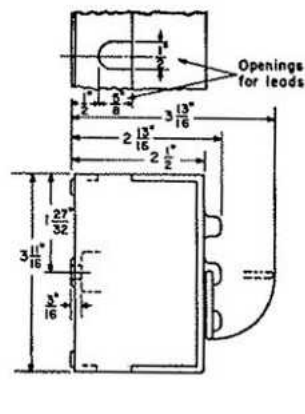
(0116B4078)  
Fig 1A.

0116B4078  
Fig 1A.



Class J Pullout Blocks  
Dimensions

Class J Pullout Block  
Dimensions



(0116B4075)  
Fig 1B.

0116B4075  
Fig 1B.



[GEGridSolutions.com](http://GEGridSolutions.com)

Grid-AIS-L4-ITI\_Model\_Pullout\_Fuse\_Block-1128-2017\_08-EN. © Copyright 2017. General Electric Company and Instrument Transformers LLC reserve the right to change specifications of described products at any time without notice and without obligation to notify any person of such changes.

### Worldwide Contact Center

Web: [www.GEGridSolutions.com/contact](http://www.GEGridSolutions.com/contact)

Phone: +44 (0) 1785 250 070

USA and Canada: +1 (0) 800 547 8629

Europe, Middle East and Africa: +34 (0) 94 485 88 00